

From Earth Science to Societal Impact

One Scientist's Journey

Dr. Hansi Singh

June 2025

30th Annual CESM Workshop





Shout-Outs



Meanderings

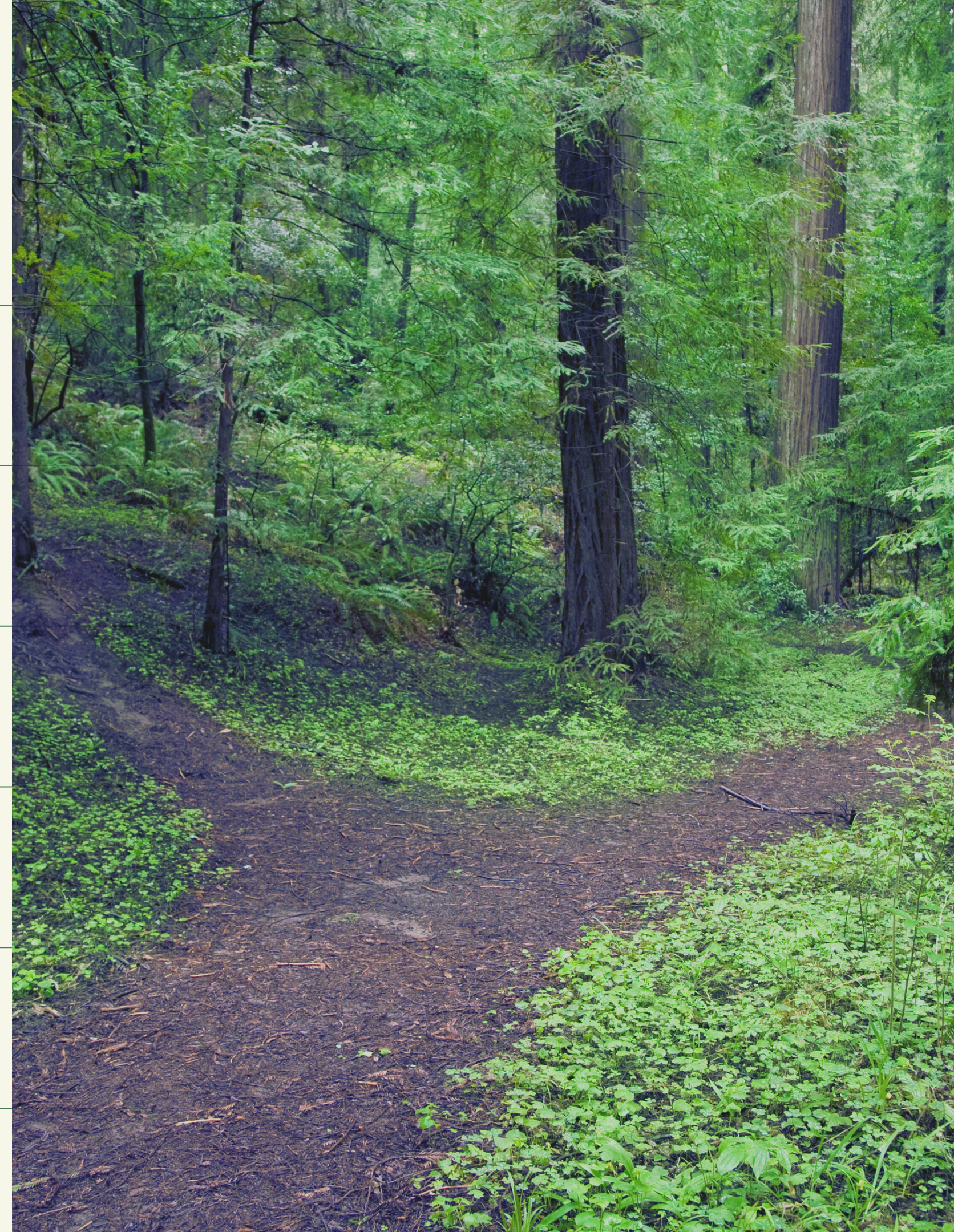
My Career Story and the Founding of Planette AI

AI for the Earth System Sciences

Taking the Leap into the Real World

The Business of Forecasting

Unsolicited Advice



My 'Career' Timeline



Dance, Travel,
Entrepreneurship,
Family

2000 - 2009



Linus Pauling Fellow
PNNL, US DOE

2016 - 2019



Co-founder & CEO
Planette AI

2023 - ??

1996 - 2000

BA in Physics
Rice University



2010 - 2015

PhD, Atmospheric Sciences
MS, Applied Math
University of Washington



2019 - 2024

Assistant Professor
Earth & Ocean Sciences
University of Victoria



Planette AI is a ClimateTech Startup, Mission-Driven to Use the Latest Science and AI to Build Climate Resilience

>\$3M
total
funding

5
team
members

15
B2B
users

12
expert
advisors

>1 PB
training
data

A Proud NSF SBIR Portfolio Company



America's
SEED FUND
SBIR.STTR

Planette AI's Founding Story

parc[®]
A Xerox Company




University
of Victoria



*With Dr. Kalai Ramea, Planette co-founder & CTO,
SF Climate Week 2023.*

The Paradox of the Earth Sciences



**Earth Science
research is fun,
*just because.***



**Society *really*
needs our
science.**

The Challenge: Bridging the Gap



What Science Wants

Rigorous, empirical,
reproducible inquiry
into *how* the world
works

What Society Wants

Insightful, valuable
technology that
solves a problem or
pain point

Hundreds of Conversations to Understand Societal Needs

"Nearer"-term
>>>
Long-term



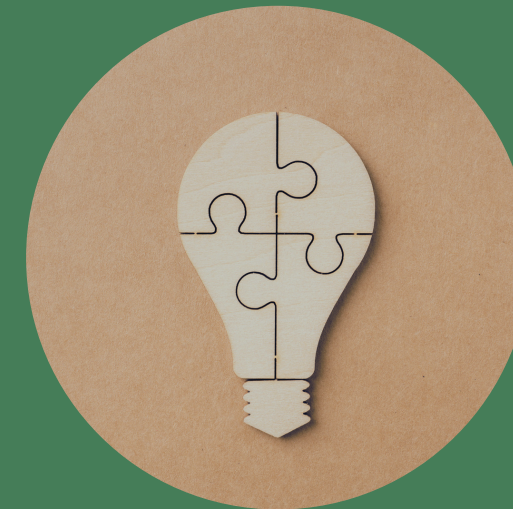
Humans make decisions over weeks and months, not decades.

Promote Environmental Security



Industries that are environmentally vulnerable need greater certainty.

Be Relevant to Industry's Needs



Insights are more valuable than raw data, regardless of quality.

Productize & Package Insights



Presentation of insights into a digestible format is critical.

How Society Sees Future Outlooks

The S2S2D Gap



Weather Forecasts
(0 - 10 days)



Climate Projections
(30+ years)

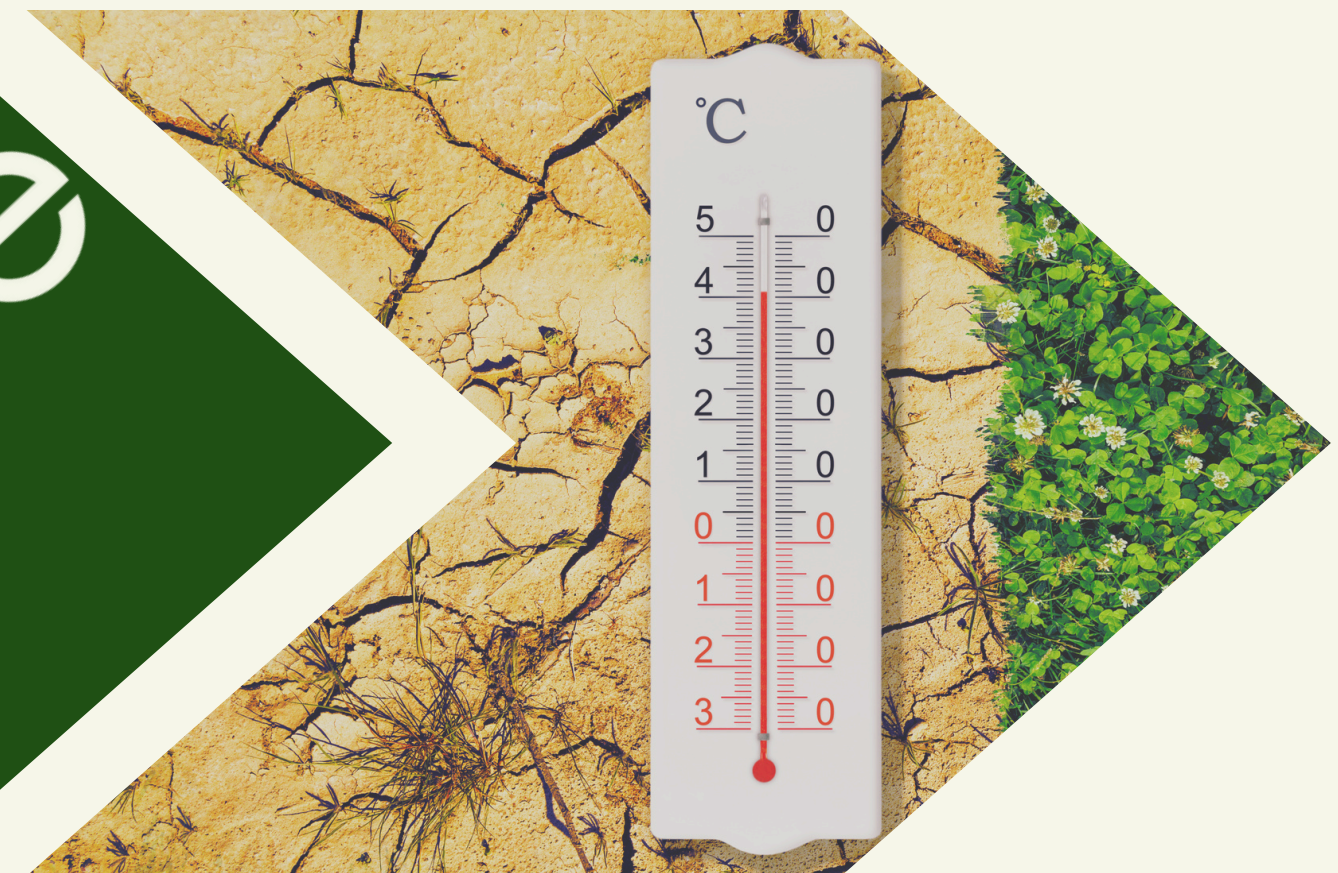
How Our Work Fits In



**Weather Forecasts
(0 - 10 days)**



**Gap (S2S2D) Forecasts
(1 week - 5 years)**



**Climate Projections
(30+ years)**



AI in the Earth Sciences

Weather forecasting has
been revolutionized by AI,
but what's next?

There are Huge Opportunities for Advancing S2S2D Forecasting Using AI



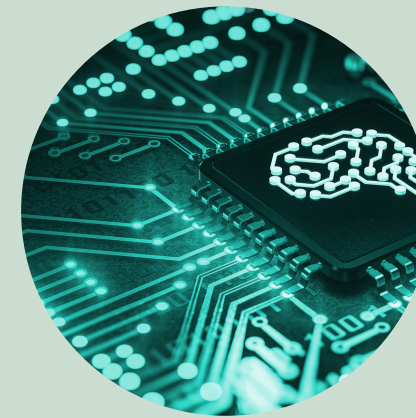
Diverse Datasets

Earth System Model output,
Satellite observations,
Sparse *in situ* measurements



Different Architectures

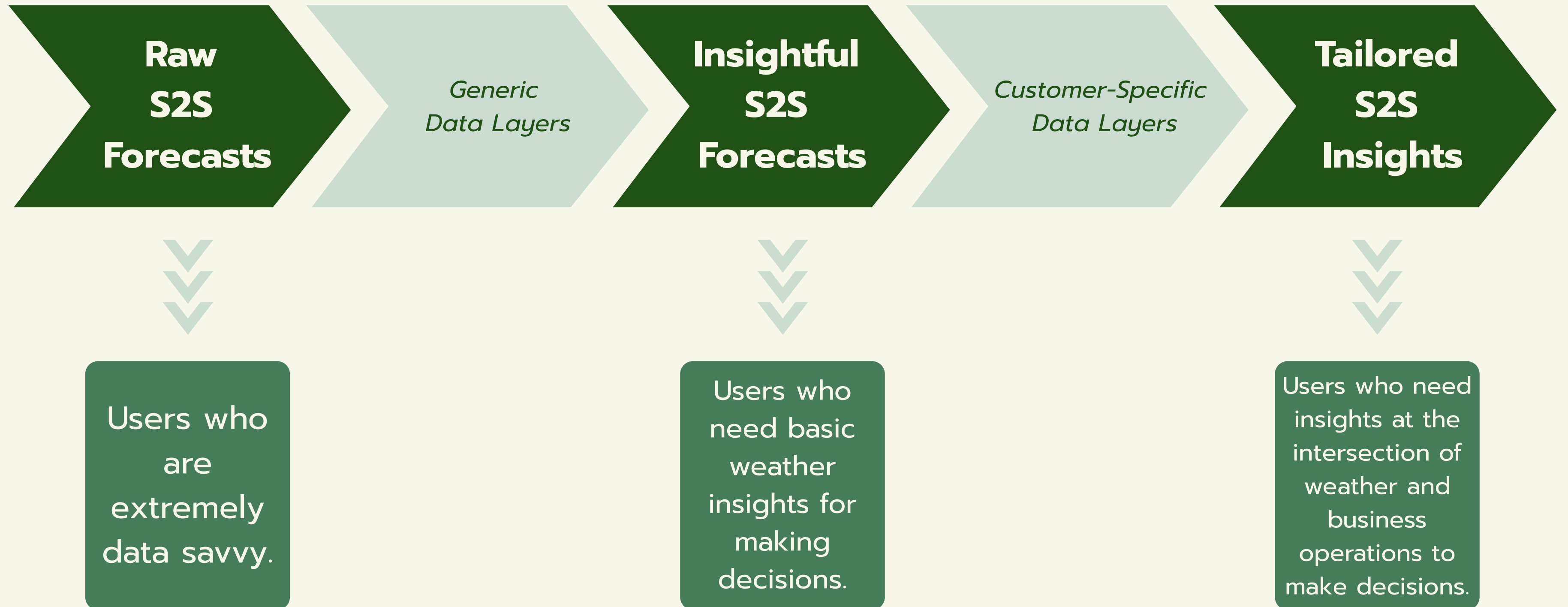
Exotic neural nets and operators,
Transformers,
Latent space representations



Multiple Modeling Approaches

Brute-force training,
Physics-informed ML,
Foundation modeling

How S2S Forecasts Can Inform Businesses



Our Early Customers



Finance



Insurance



**Shipping &
Logistics**



Utilities



**Humanitarian
Organizations**



Pro Bono Forecasts for Climate Resilience



Some Unsolicited Advice for Scientists Who Want to Make Impact

1

Listen to people to
understand their
problems

2

Work *with*
stakeholders (or
someone who does)

3

Find a
complementary
science buddy



Conversations with Farmers

Gamo District, Ethiopian Highlands
April 2025

The Magic & Terror of Founding a Startup



Create a new
strategy and
business model!



Nurture your
obsessions and
compulsions!



Get rewarded
when you do
your job well!



Stress about
everything all
the time!

There are *So Many Opportunities* Out There to Make Impact

Big
companies
that need
your Earth
expertise

Small,
growing
companies
that are
trying cool
things

So many
new
companies
and orgs
to build





Thank you!



hansi@planette.ai

Please get in touch!